



THIS IS CONFIDENTIAL INFORMATION.
THIS DRAWING AND DESIGN IS THE PROPERTY OF LIQUIP INTERNATIONAL PTY LIMITED.
IT MUST NOT BE COPIED OR REPRODUCED IN ANY WAY WHATSOEVER AND/OR PASSED ON
TO ANY THIRD PARTY WITHOUT WRITTEN AUTHORITY.

LIQUIP INTERNATIONAL PTY LIMITED - ENGINEERING DEPARTMENT - 13 HUME RD SMITHFIELD SYDNEY NSW AUSTRALIA 2164
PH: +61 2 9725 9000 FAX: +61 2 9609 4739 EMAIL: engineering@liquip-nsw.com.au

LIQUIP SPLIT FLANGE HEAVY DUTY SWIVEL 100MM

DATA SHEET

PART N°: LCB4-1

- TITLE:** Heavy duty swivel with three bearings for high-load applications. Split-flange construction provides fully sealed bearing pack.
- OPERATION:** A straight swivel, vertical loads are absorbed by a double-row ball bearing with radial loading capability reinforced by a third row of needle bearing. Split-flange construction ensures that a product seal failure does not wash out the grease from the bearing pack, so preserving its integrity.
- FEATURES:** Used as the base swivel for extreme loads in long-range 'wet' loading arms where forces are too high for standard.
- DISMANTLE:** Remove both ball retaining plugs, hold the swivel with the holes pointing down and rotate to drop out the balls. The female swivel can then be removed complete with needles and seals. If only the product seal is damaged the bearing pack need not be disturbed.
- ADJUSTMENT:** None.
Grease at three-monthly intervals with recommended grease.
See Installation and Maintenance Manual for full details.
- MOUNTING:** 100mm ANSI 150 raised face bottom flange. Liquip supply nominated top flange that is 100mm ANSI 150 pattern with flat face machined for seal.
- TECHNICAL DATA:** Steel housings with nitrided surfaces to provide hardness equal to ball bearing.
Hardened and chromed steel balls and needle rollers.
Viton o-ring seals.
Brass retainer plugs.
Tell-tale hole supplied between product seal and bearing seal to show if main seal is leaking and to relieve pressure build-up.
Bearing pack incorporates Liquip's relief valve system to ensure proper re-greasing and debris removal.
Pressure rating: 1,000 kPa working pressure
1,500 kPa test pressure.
Weight: 25.0 kg
- ASSOCIATED EQUIPMENT:** LTD 4 series loading arms.
LTS 4 series loading arms.
LTD4-11 cast elbow with support arm.

Overall dimensions shown on the drawing overleaf

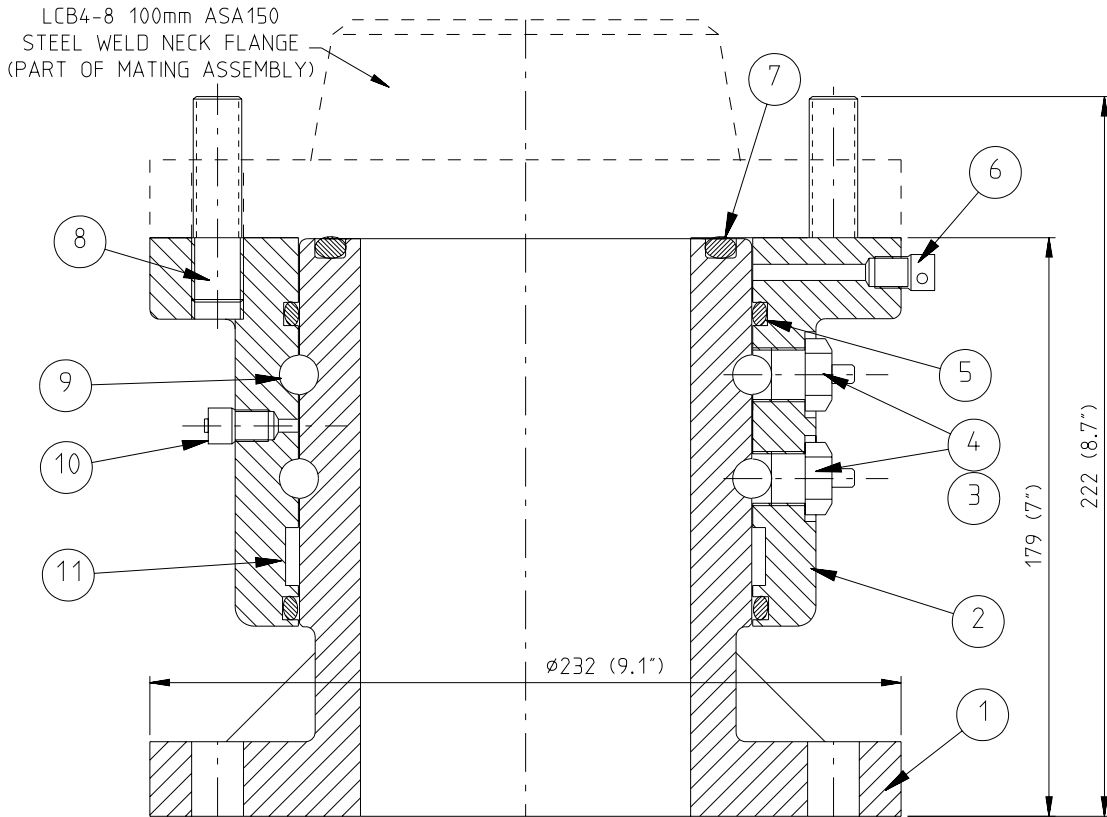


THIS IS CONFIDENTIAL INFORMATION.
THIS DRAWING AND DESIGN IS THE PROPERTY OF LIQUIP INTERNATIONAL PTY LIMITED.
IT MUST NOT BE COPIED OR REPRODUCED IN ANY WAY WHATSOEVER AND/OR PASSED ON
TO ANY THIRD PARTY WITHOUT WRITTEN AUTHORITY.

LIQUIP INTERNATIONAL PTY LIMITED - ENGINEERING DEPARTMENT - 13 HUME RD SMITHFIELD SYDNEY NSW AUSTRALIA 2164
 PH: +61 2 9725 9000 FAX: +61 2 9609 4739 EMAIL: engineering@liquip-nsw.com.au

LIQUIP

LCB4-1

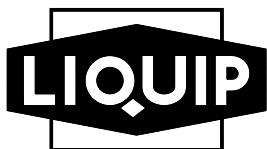


ITEM	PART NO	DESCRIPTION	MATERIAL	QTY
1	LCB4-6	MALE SWIVEL TO ASA150	STEEL	1
2	LCB4-7	FEMALE SWIVEL TO ASA150	STEEL	1
3	0481	GREASE NIPPLE 1/4" UNF	BRASS	2
4	LAN400-9	PLUG RETAINER BALL	BRASS	2
5	4552	O-RING	VITON	2
6	AVV3.5-V-5	BREATHER	BRASS	1
7	4563	O-RING	VITON A	1
8	4900	STUD 5/8" UNC X 3" B7	STEEL	8
9	2334	BALL BEARINGS $\varnothing 12$	STEEL	72
10	1525	RELIEF FITTING 1/8" BSP	BRASS	1
11	4531	NEEDLE ROLLER $\varnothing 4$ ENDS	STEEL	112

X750096

Issue: E

METERS - VALVES - VENTS - MANHOLES - PUMPS - HOSEREELS - OVERFILL PROTECTION - LOADING ARMS - ELECTRONIC DIPSTICKS



LIQUIP INTERNATIONAL PTY LTD

13 Hume Road
 Smithfield, Sydney
 NSW Australia 2164
 Phone: +61 2 9725 9000
 Fax: +61 2 9725 1252

DISTRIBUTORS

See inside front cover
 for Liquip branches
 and Distributors or visit

www.liquip.com