

# 94250

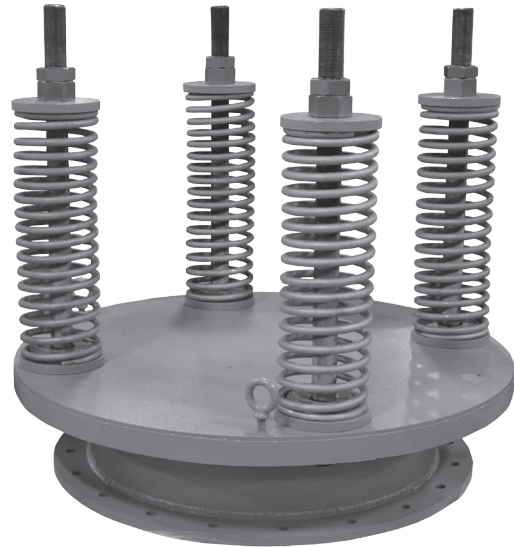
## Spring Loaded Emergency Vent

# SHAND & JUR'S

## 94250 Spring Loaded Emergency Vent

The Shand & Jurs 94250 Spring Loaded Emergency Vent is an economical solution to emergency venting on higher pressure tanks where weighed pallet systems are impractical. The springs provide a tighter, more economical seal for higher operating pressures. The constant force of the springs immediately reseal the pallet after the overpressure is relieved. This minimizes VOC's and odor emissions.

The 94250 is excellent protection against costly tank roof rupture repair. It is light weight for easy installation and maintenance. Spring loading eliminates the need for heavy weights which permits the higher pressures and larger diameters. Over 90 years of proven design experience insures reliable, trouble free operation. U.S. made high quality corrosion resistant materials provide an extended service life.



### Specifications

#### Pressure Setting Range:

1-15 PSIG

#### Temperature Range:

Body and Seal Options for Process Temperature Ranges of -70°F to 400°F

#### Flanges:

ANSI and API compatible.  
EN1092-1 and custom sizes available.

### Materials of Construction

#### Base:

Aluminum, Cast Steel, 316 Stainless Steel

#### Cover:

Aluminum, Steel, 316 Stainless Steel

#### Spring:

Steel, (Stainless Steel optional)

#### Seal:

Buna, Viton, EPDM, Teflon

### Features

- Spring Loaded Emergency Relief
- Tight Seal
- 1 to 15 PSI Settings
- Sizes 16", 20" and 24"
- Standard Aluminum, Carbon Steel or Stainless Steel options

# SHAND & JUR'S

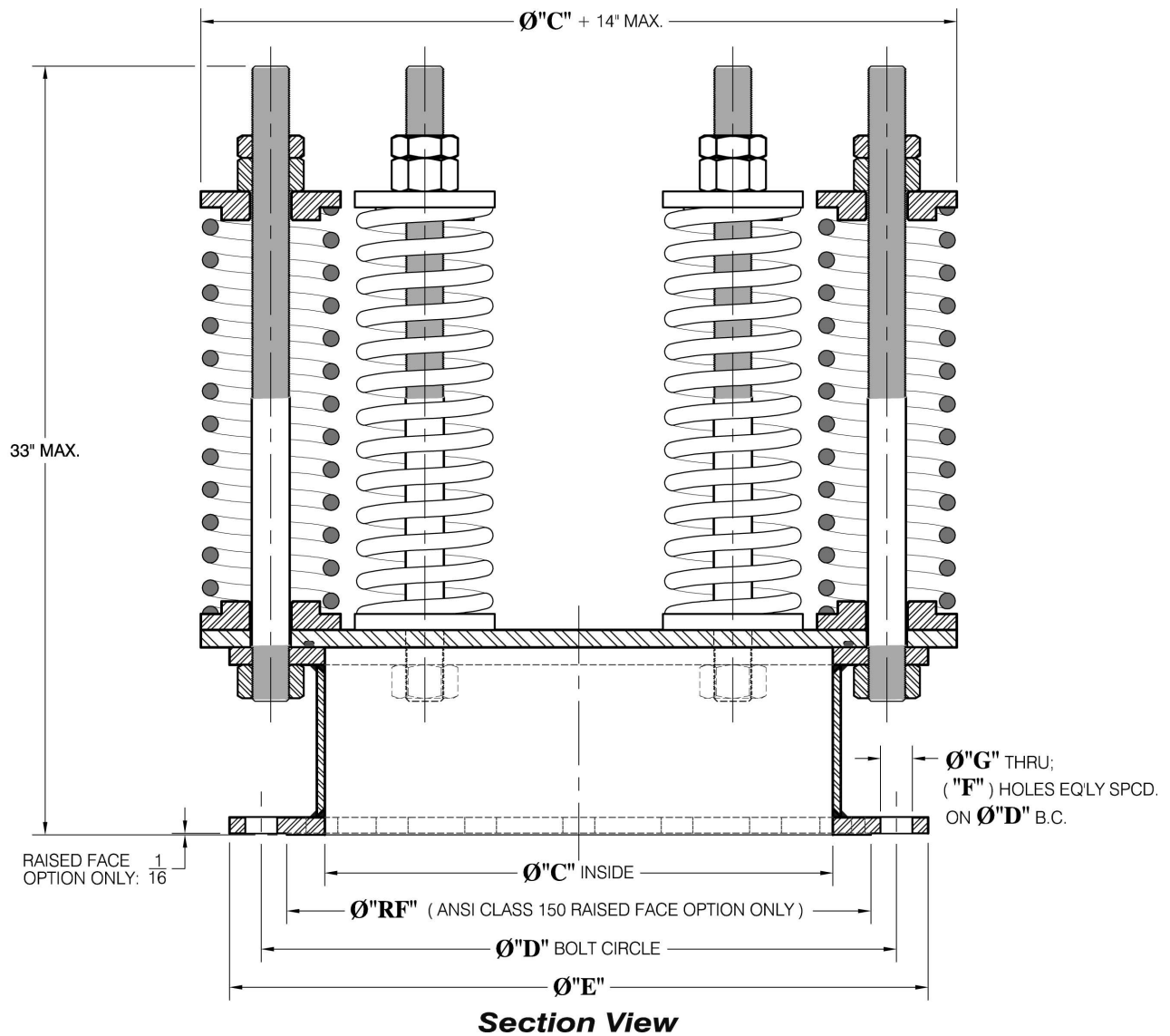
5911 Butterfield Road Hillside, IL 60162 • tel: (708) 236-6000 • fax: (708) 236-6006  
sales@ljtechnologies.com • www.ljtechnologies.com • ISO 9001: 2008 Certified

Rev: 94250-3C

## Outline Dimensions

Vent Size	Connection Matching Size	Diameter "C"	Diameter "D" Bolt Circle	Diameter "E"	Holes "F"	Diameter "G"
16"	16" 125 lb. / 150 lb. ANSI	16	21 ¼	23 ½	16	1 ⅛
20"	20" API Roof Manhole	20	23 ½	26	16	¾
20"	20" 125 lb. / 150 lb. ANSI	20	25	27 ½	20	1 ¼
24"	24" API Roof Manhole	24	27 ½	30	20	¾
24"	24" 125 lb. / 150 lb. ANSI	24	29 ½	32	20	1 ⅜

Other Connection Sizes Available



All designs subject to change. Certified dimensions and specifications available upon request.

# 94250 Ordering Guide

## Model Number Selection

The model number will consist of a base number **94250** followed by 8 digit numbers. These digits will represent 6 option tables.

**94250 - AB - CD - EF - GH**

## Ordering Information

Specify:

1. Model 94250 Spring Loaded Emergency Vent
2. Size Required
3. Base and Cover Material
4. Pressure Setting

**NOTE:** Models with ATEX Certification are available for Options EF = 01 thru 07

5. Flange Configuration
6. Seal Material
7. CE for Ordinary EU Locations, specify G1.
8. ATEX Certification for Group IIB, IIA EU Locations, specify G2

### Table AB - Size

Option AB	Size (Inches)	Material
11	16	Steel
12	16	316 Stainless Steel
13	16	Aluminum
21	20	Steel
22	20	316 Stainless Steel
23	20	Aluminum
31	24	Steel
32	24	316 Stainless Steel
33	24	Aluminum

### Table EF - Pressure Range

Option EF	Pressure Range
01	1.0 - 1.5
02	1.5 - 2.0
03	2.1 - 3.0
04	3.1 - 4.0
05	4.1 - 5.0
06	5.1 - 6.0
07	6.1 - 7.0
08	7.1 - 8.0
09	8.1 - 9.0
10	9.1 - 10.0
11	10.1 - 11.0
12	11.1 - 12.0
13	12.1 - 13.0
14	13.1 - 14.0
15	14.1 - 15.0

### Table C - Flange

Option C	Flange
1	ANSI 125 / 150 lb. FF
2	* API 650 FF
3	** ANSI 150 lb. RF
4	EN1092-1 FF

\* API Flange available in 20 & 24 inch size only

\*\*Steel, Stainless Steel Only

### Table G - CE or ATEX Certification

Option G	Description
0	Standard
1	CE Mark
2	ATEX Certification

CE/ATEX option not available for pressure > .5 Bar (7.5 PSIG)

### Table D - Seal Material\*

Option D	Seal Material
0	Buna
1	Viton
2	EPDM

\* Tank product must be specified for seal selection

### Table H - Spring / Hardware Material

Option H	Material
A	Plated Steel / Plated Steel
B	Plated Steel / Stainless Steel
C	Stainless Steel / Stainless Steel

CE/ATEX option not available for pressure > .5 Bar (7.5 PSIG)